



The Future of Integrated Coastal Management and Governance

Dr. Richard W. Spinrad
Assistant Administrator
NOAA's National Ocean Service

Renewable Natural Resources Foundation
Congress on Building Capacity for Coastal Solutions

December 6, 2004

INCREASING PRESSURES

noaa's national ocean service

CONNECTING PEOPLE AND SCIENCE TO SUSTAIN MARINE LIFE

PRESS ROOM

FINAL REPORT

- Press Room
- Full report

Report by Section

- Executive Summary
- State of America's Oceans
- Conclusions
- Recommendations
- Detailed Recommendations
- Appendixes
- Charts and Figures

Press Room
Report Links Sprawl to Declining Coastal Health

When impervious surface exceeds 10 percent, rivers, creeks, and estuaries degrade

(Washington, D.C.) As Americans prepare to celebrate Earth Day, more than half of us live along the coasts. Within 15 years, an additional 27 million people are estimated to live in coastal counties, which comprise only 17 percent of the nation's area. A new report prepared for the independent Pew Oceans Commission and released today links this development and growth along the coasts to the declining health of our ocean habitats and resources.



WHO ARE . . .

. . . Coastal Ocean Users?

- Shipping
- Tourism
- Fishing
- Energy
- Construction
- Government
- Non-governmental organizations
- Public health
- Research



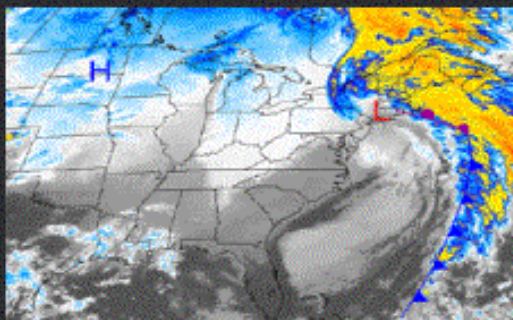
NOAA STRATEGIC PLAN

Mission Goals



Ecosystem

Commerce and Transportation



Weather and Water



Climate

noaa's national ocean service

GLOBAL LEADER

for Integrated Management of the Ocean

- **New focus on requirements for resource management**
- **New partnerships to coordinate federal investments in ocean and coastal management**
- **Integrated and multidisciplinary approach**
- **Global leadership**
 - *U.S. representative to Intergovernmental Oceanographic Commission*
 - *high-level policy (Earth Observing Summit)*
 - *technical leadership (international scientific networks)*

WHAT IS...

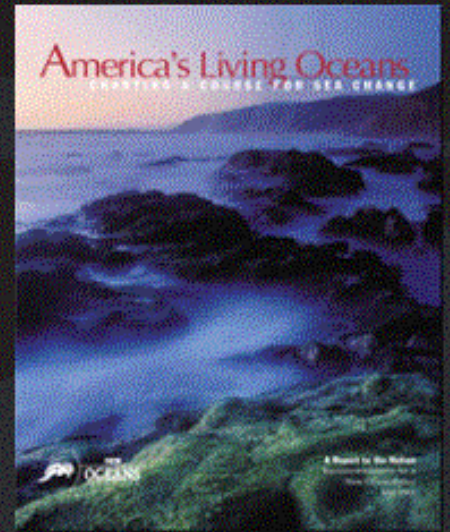
... INTEGRATED MANAGEMENT?

- **Cross-sectoral**
- **Multiple-objectives and balanced**
- **Intergovernmental**
- **Land-ocean interface**
- **Cross-disciplinary**
- **Cross-functional**
- **Focused on governance**

INTEGRATED MANAGEMENT

Recommendations

U.S. Commission on Ocean Policy



Pew Oceans Commission

INTEGRATED MANAGEMENT

Fundamental Principles*

- **Ocean-land-atmosphere connections**
- **Regional approaches to ecosystem-based management**
- **Multiple-use management**
- **Best available science and information**

*from the U.S. Commission on Ocean Policy

COASTAL ZONE MANAGEMENT ACT

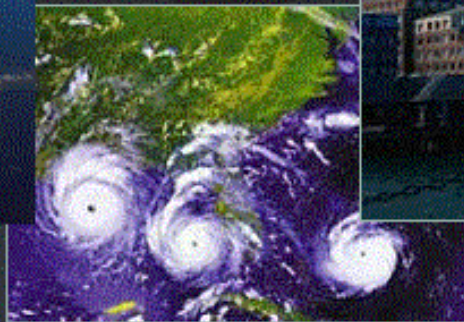
noaa's national ocean service



PARTNERSHIPS

NOS and Coastal States

- Hazard Mitigation, Risk Assessments
- Special Area Management Planning
- Waterfront Revitalization
- Brownfields Redevelopment
- Conservation Planning
- Coastal Restoration
- GIS Mapping
- Remote Sensing
- Site Assessment & Remediation
- Charting & Navigation
- Training
- Oceans and Human Health
- Harmful Algal Blooms



SMART GROWTH NETWORK



**working with
coastal
communities**



noaa's national ocean service

TRAINING COASTAL MANAGERS



National Estuarine Research Reserves



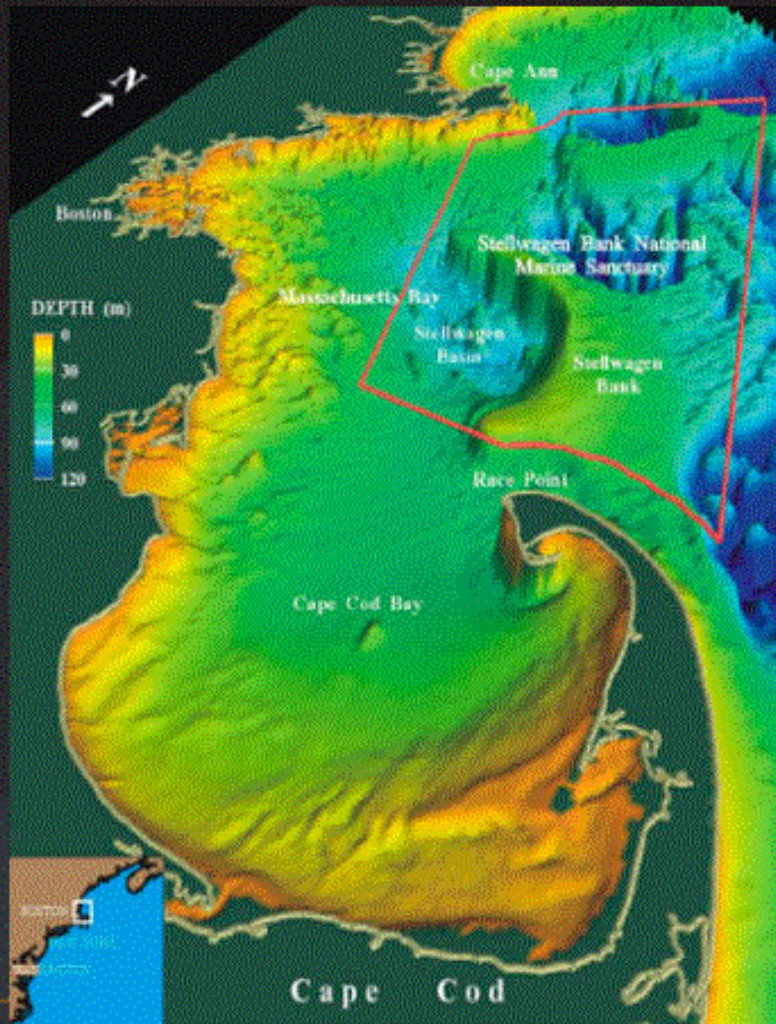
NOAA
Coastal Services Center

Sea Grant

from SCIENCE to MANAGEMENT

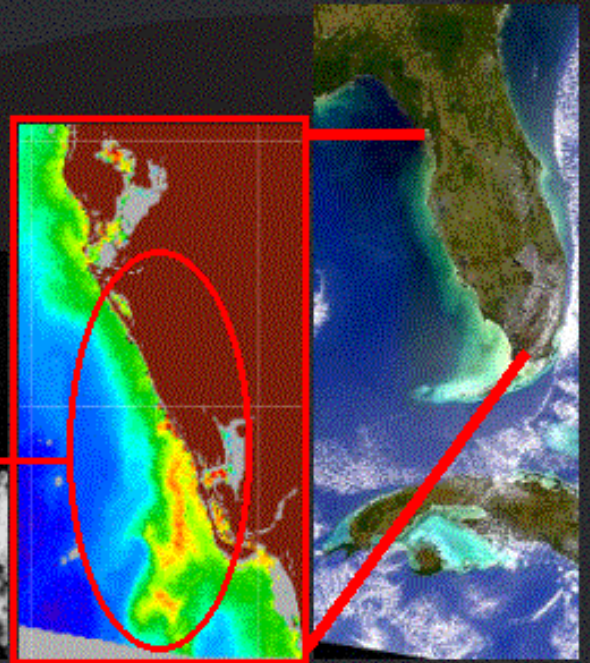
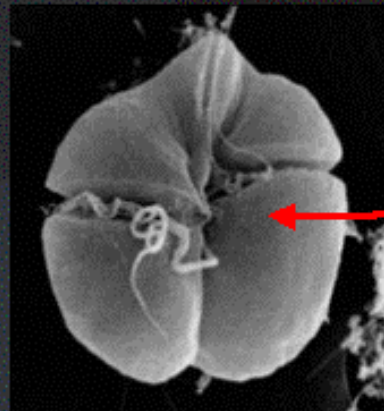
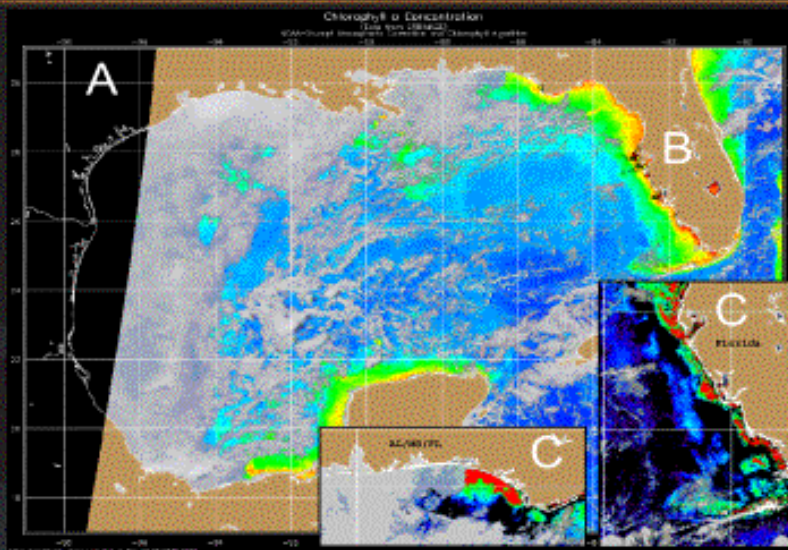
- **Involve coastal managers in a dialogue with scientists to help shape priorities for policy-driven research.**
- **Ask right kinds of questions – from perspective of users – to ensure utility of products and supporting technologies**
- **Move research results to operational, value-added context**
- **Create process for evaluation and assessment of effectiveness**
- **Provide data and decision-support information**

MARINE PROTECTED AREAS



HARMFUL ALGAL BLOOMS:

Forecasting



noaa's national ocean service

COASTAL STORMS

Flood Warning System



noaa's national ocean service